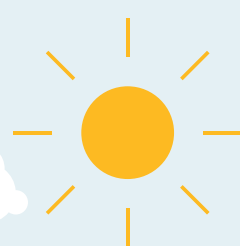


# SUMMER 2021 RATES & DATES

## LOVE LIFE. LOVE COLLEGE. LOVE LIVING ON CAMPUS.

Summer housing is open to all students enrolled in a minimum of 1 credit hour in either summer semester session. Prices below are listed per person. If the summer semester is your first time living on-campus, a \$130 application fee may apply.



### BENCHMARK PLAZA & SHORELINE RIDGE

Open to newly admitted and current students [ Buildings 820 and 825, 827 - 830 ]

	2 Bedroom Apartment	3 Bedroom Apartment	4 Bedroom Apartment
Session 1 <small>May 14 - June 27</small>	1,367	1,278	1,195
Session 2 <small>June 28 - August 7</small>	1,383	1,293	1,208
<b>Total</b>	<b>2,750</b>	<b>2,571</b>	<b>2,403</b>

### LASSONDE STUDIOS

Open to newly admitted and current students.

2-Person Loft	Pod	Cluster Single
1,637	1,677	1,316
1,648	1,689	1,325
<b>3,285</b>	<b>3,366</b>	<b>2,641</b>

### BLOCK 44

Open to newly admitted and current students.

	Studio	1 Bedroom Single	1 Bedroom Double	2 Bedroom Single
Session 1 <small>May 14 - June 27</small>	1,783	1,885	1,313	1,786
Session 2 <small>June 28 - Aug 7</small>	1,803	1,906	1,328	1,806
<b>Total</b>	<b>3,586</b>	<b>3,791</b>	<b>2,641</b>	<b>3,592</b>

### DOWNTOWN COMMONS

Open to newly admitted and current students.

(DTC 1) 2 Bedroom Single	(DTC 1) 3 Bedroom Single	(DTC 2) 2 Bedroom Single
1,113	999	1,113
1,144	1,027	1,144
<b>2,257</b>	<b>2,026</b>	<b>2,257</b>

### DINING ON CAMPUS

There are a variety of locations to dine on campus this summer, including a cafe, a food court, and a convenience shop. To get the most out of your on-campus dining experience, purchase a flex meal plan from the options below.

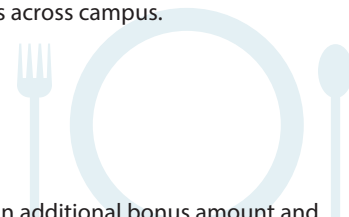
Meal plans can be purchased for the full summer semester (May 14 - Aug. 7). Remaining dollars will roll over into the fall 2021 semester.

	Flex 250	Flex 500	Flex 750
Meal Plan Cost <small>May 14 - August 7</small>	250	500	750
<b>*Total Value</b>	<b>287.50</b>	<b>550</b>	<b>862.50</b>

You can also view locations, hours, and answers to FAQs here: [dineoncampus.com/utah](http://dineoncampus.com/utah)

A meal plan is **required** for students living in a Lassonde Cluster.

Meal plans optional for students living in other living spaces and room types across campus.



\*Total value includes an additional bonus amount and reflects the total amount you will be able to spend on campus. You will only pay the amount listed for the Meal Plan Cost.

### RESIDENCE HALL ASSOCIATION DUES - \$16.50 PER SUMMER

Dues support the Residence Hall Association (RHA) - a student-led organization that provides programming for residents. Dues are non-refundable.

## BREAK HOUSING

Students with consecutive housing contracts (spring and summer or summer and fall) are eligible for Break Housing. Traditional Break Housing is available for students who will be on campus during the stayover dates and Break Storage is available for students who will not be on campus during break dates. Break Storage is also available through Dorm Room Movers at an additional cost.

**May Break Housing:** May 8 - May 14, 2021  
- Traditional Break Housing: \$240

**August Break Housing:** August 7 - 19, 2021  
- Traditional Break Housing: \$480

Learn more at <https://housing.utah.edu/apply-reserve/housing-during-break/>

## PAYMENT INFORMATION

You may view your account information online in CIS. This is the one location where you will be able to view and pay for your tuition, housing bill, and meal plan bill. It is your responsibility to keep the account up to date. Students will pay for their housing cost at the same time they pay for their meal plan and tuition. These charges will be collected via Income Accounting. For more information about paying and for payment plan options, please visit: [housing.utah.edu/apply-reserve/rates-n-housing-account/](https://housing.utah.edu/apply-reserve/rates-n-housing-account/)

## EARLY ARRIVAL

Available May 13

If you need to be on campus early for a university-affiliated reason, you can move in on May 13. You will be charged a daily rate of \$40. There is no meal plan service during this time.

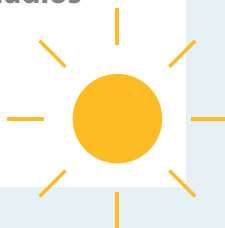
## SUMMER BUILDINGS

### Apartments

Benchmark Plaza  
Downtown Commons 1 & 2  
Shoreline Ridge  
U of U at Block 44

### Lassonde Studios

Lofts  
Pods  
Clusters



## AMENITIES

### Your rate includes:

**Bedroom furnishings:** (mattress, xl twin bed, desk, desk chair, dresser)\*  
\*Note: Lassonde pods do not include desk/desk chairs in room, but they do include community study workspace. The pods also include a full-size bed.

**Apartments also include:** Kitchen table with chairs, sofa, living room chairs, and microwave

**Services:** Internet and free laundry in each building's laundry room(s)

**Utilities:** Natural gas, electricity, water, recycling, and trash. Block 44 also includes: Pool and spa, fitness center, game room, bike repair station, and outdoor spaces with seating and barbecues.

**Note:** Parking is an additional fee at Block 44.

## CONTRACT CANCELLATION INFORMATION

### 2021 SUMMER TERM ONLY

**Up to 72 hours** from the time of making your reservation (prior to 72 hours after making your reservation) you will be able to cancel your housing by going into your HousingU account and clicking on the Contract Cancellation tab on top.

**After 72 hours** all students canceling their contract will forfeit the \$200 Reservation Fee.

**After a student moves in** individuals canceling their contract will be charged a Termination Fee, along with daily prorated charges up to the day of Contract Termination (Student must complete a Contract Termination Form and completely move out).

See the full Termination Fee schedule as posted on our website: [housing.utah.edu](https://housing.utah.edu) or in your contract.

## IMPORTANT DATES

**APRIL 1** May Break Housing application available

**APRIL 19** May Break Housing application and payment due

**MAY 8-14** May Break Housing

**MAY 14** Summer Move-In Day

**JULY 1** August Break Housing application available

**JULY 19** August Break Housing application and payment due

**AUGUST 7** Residence Halls and Apartments close. Residents must move out by 2 p.m.

**AUGUST 7-19** August Break Housing

**AUGUST 13** Early Arrival for Fall for students with approved University-sponsored activities or requirements

**AUGUST 19** Fall Move-In Day

Please note: The Utah State Board of Regents reserves the right, if necessary, to change any fees and/or charges without notice. Any error in computing charges is subject to correction. You will receive 30 days' notice of any planned increases to room or utility rates.

**Non-Discrimination Policy:** The University of Utah is fully committed to affirmative action and to its policies of nondiscrimination and equal opportunity in all programs, activities, and employment with regard to race, color, national origin, sex, gender identity/expression, age, status as a person with a disability, religion, sexual orientation, and status as a veteran or disabled veteran. The University seeks to provide equal access to its programs, services, and activities for people with disabilities. Reasonable prior notice is needed to arrange accommodations. Evidence of practices not consistent with these policies should be reported to the Office of Equal Opportunity and Affirmative Action, 801-581-8365 (V/TDD). Upon request, this information is available in an alternative format, such as cassette Braille, or large print.