

Apartment Styles

See these layouts online at www.housing.utah.edu.



Shoreline Ridge 2-Bedroom Apartment



Renderings are an artist's conception and are intended only as a general reference.
Features, materials, finishes and layout of subject unit may be different than shown. 3DPlans.com

Shoreline Ridge 3-Bedroom Apartment



Renderings are an artist's conception and are intended only as a general reference. Features, materials, finishes and layout of subject unit may be different than shown. 3DPlans.com

Shoreline Ridge 4-Bedroom Apartment



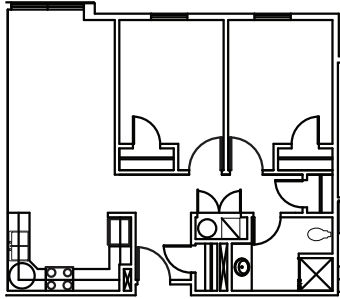
Renderings are an artist's conception and are intended only as a general reference. Features, materials, finishes and layout of subject unit may be different than shown. 3DPlans.com

Apartment Styles

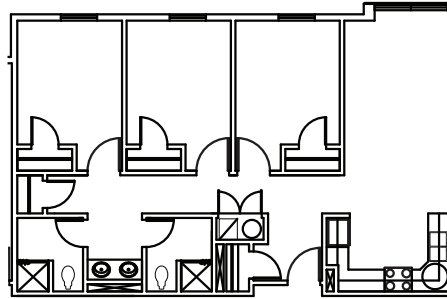
See these layouts online at www.housing.utah.edu.

Benchmark Plaza

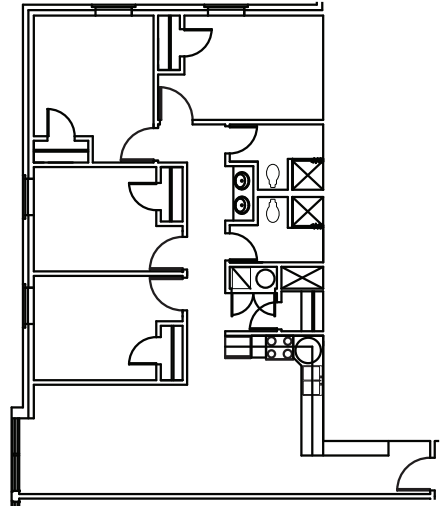
Two-, Three- and Four-Bedroom Furnished Apartments
Available to: Second-year, Third-year and Fourth-year Students



2-Bedroom Apartment
Bedroom: 10' x 11'
Approximate square
footage: 850 sq. ft.



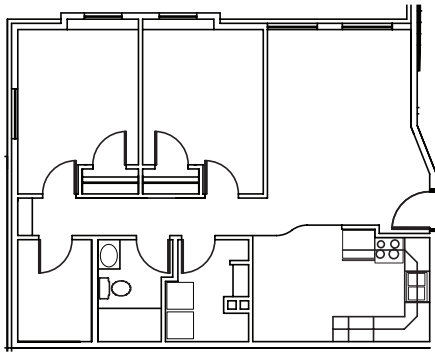
3-Bedroom Apartment
Bedroom: 10' x 11'
Approximate square
footage: 1000 sq. ft.



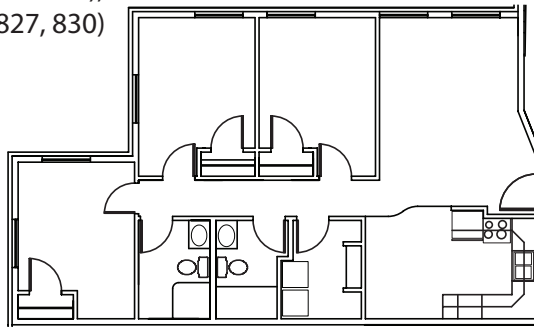
4-Bedroom Apartment
Bedroom: 10' x 11'
Approximate square
footage: 1200 sq. ft.

Shoreline Ridge

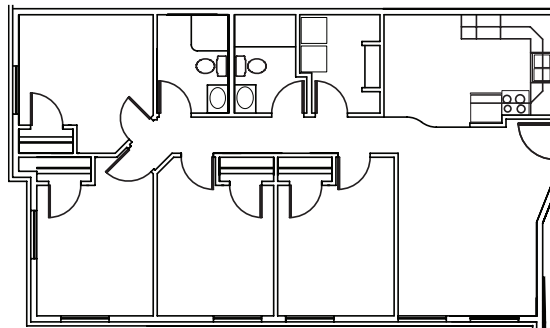
Two-, Three-, and Four-Bedroom Apartments
Available to: Graduate Students (Buildings 825-829),
Third- and Fourth-year Students (Buildings 827, 830)



2-Bedroom Apartment
Bedroom: 10' x 11'
Living Room: 15' x 12.5'
Approximate square footage:
825 sq. ft.



3-Bedroom Apartment
Bedroom: 10' x 11'
Living Room: 15' x 12.5'
Approximate square
footage: 955 sq. ft.



4-Bedroom Apartment
Bedroom: 10' x 11'
Living Room: 15' x 12.5'
Approximate square
footage: 1100 sq. ft.

* These floor plans are approximate only and may not reflect actual configurations.