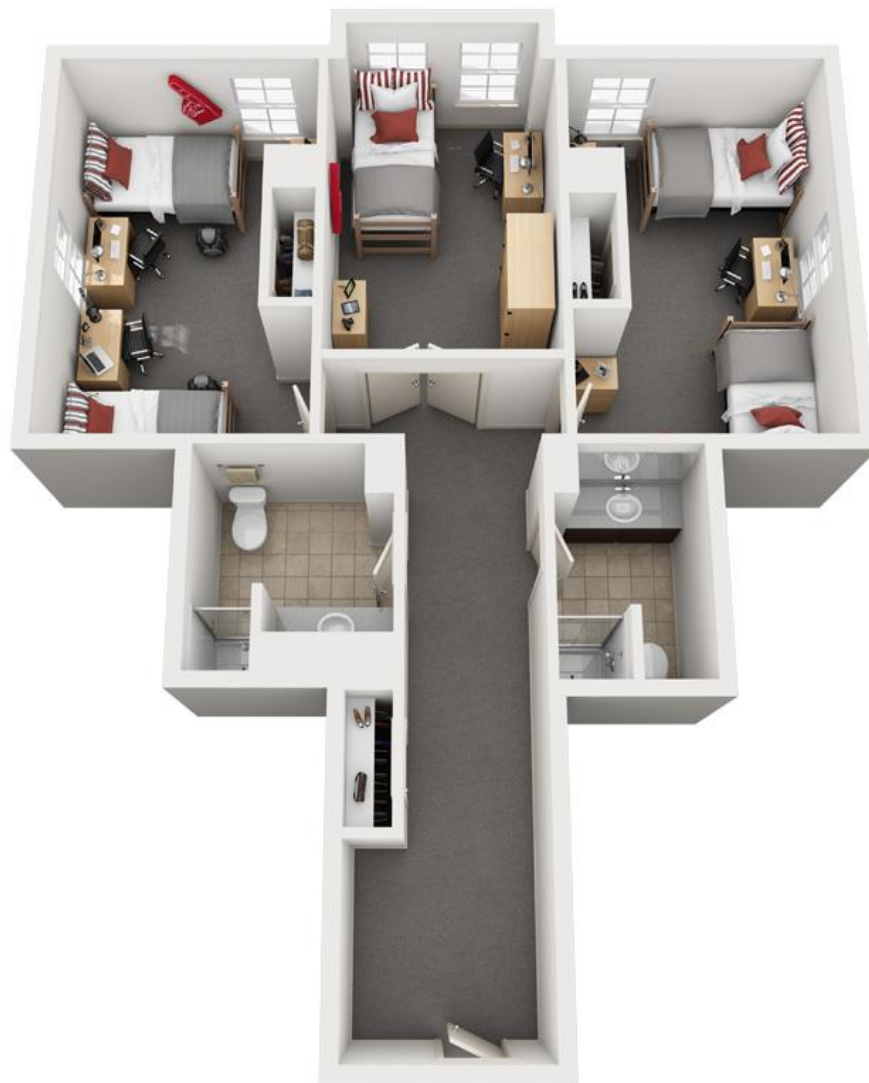


Residence Hall Room Styles

See these layouts online at www.housing.utah.edu.



Sage Point Double Double Single



Renderings are an artist's conception and are intended only as a general reference.
Features, materials, finishes and layout of subject unit may be different than shown. 3DPlans.com

Sage Point Single Room (2 Bedroom)



Renderings are an artist's conception and are intended only as a general reference. Features, materials, finishes and layout of subject unit may be different than shown. 3DPlans.com

Sage Point Single Room (5 Bedroom)



Renderings are an artist's conception and are intended only as a general reference. Features, materials, finishes and layout of subject unit may be different than shown. 3DPlans.com

Sage Point Super Triple



Renderings are an artist's conception and are intended only as a general reference. Features, materials, finishes and layout of subject unit may be different than shown. 3DPlans.com

Sage Point Super Single



Renderings are an artist's conception and are intended only as a general reference. Features, materials, finishes and layout of subject unit may be different than shown. 3DPlans.com

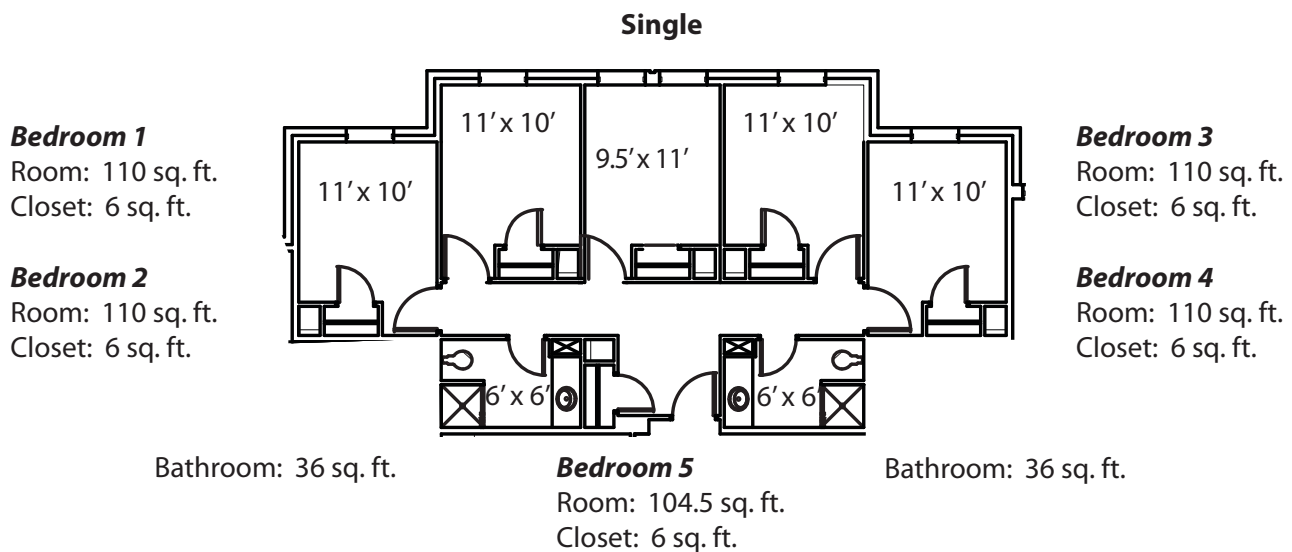
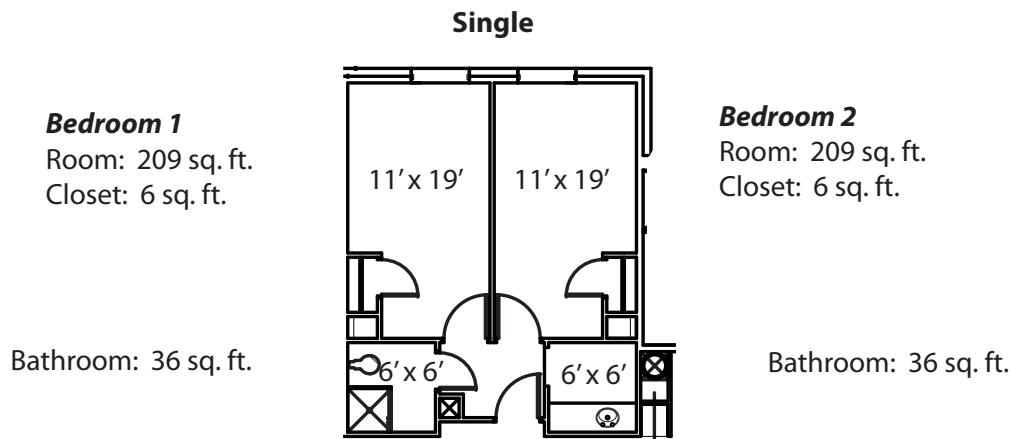
Residence Hall Room Styles

See these layouts online at www.housing.utah.edu.



Sage Point

Single Rooms with either two or five bedrooms.
Available to: First-Year Students



* These floor plans are approximate only and may not reflect actual configurations. There may be variation in size.

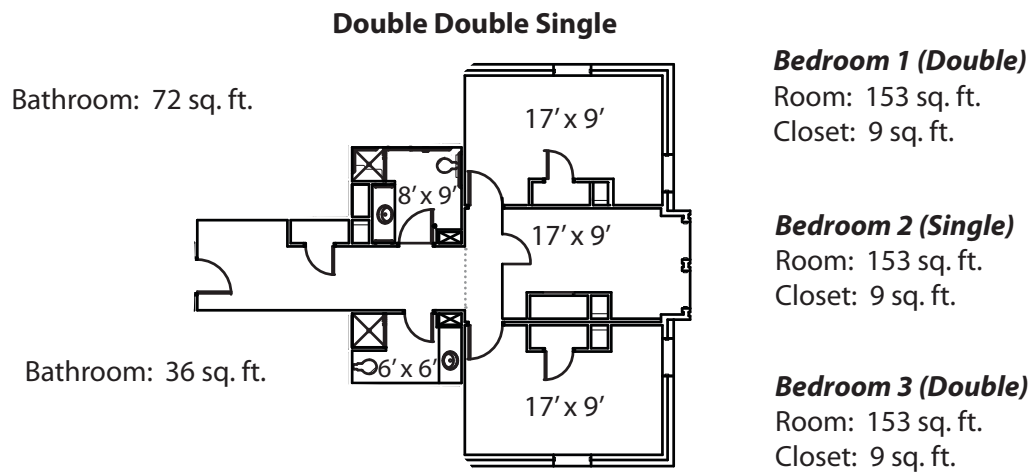
Residence Hall Room Styles

See these layouts online at www.housing.utah.edu.



Sage Point (continued)

Double Double Single Rooms
Available to: First-Year Students



*These floor plans are approximate only and may not reflect actual configurations. There may be variation in size.

Residence Hall Room Styles

See these layouts online at www.housing.utah.edu.



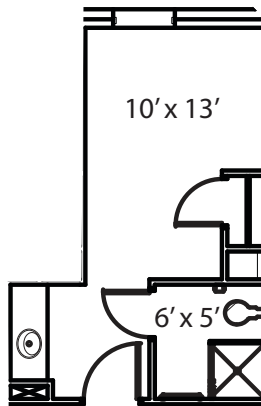
Sage Point (continued)

Super Single or Super Triple
Available to: First Years

Super Single

Bedroom

Room: 130 sq. ft.
Closet: 7 sq. ft.

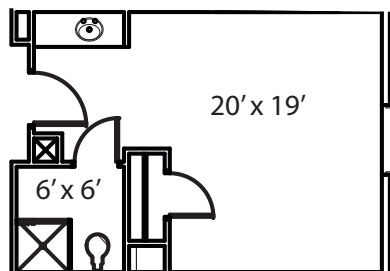


Bathroom: 30 sq. ft.

Super Triple

Bedroom

Room: 380 sq. ft.
Closet: 8 sq. ft.



Bathroom: 36 sq. ft.

* These floor plans are approximate only and may not reflect actual configurations. There may be variation in size.