

# Honors Housing Apartment Styles

See these layouts online at [www.housing.utah.edu](http://www.housing.utah.edu).



## MHC 4-Person Apartment: Single Rooms

---



Renderings are an artist's conception and are intended only as a general reference.  
Features, materials, finishes and layout of subject unit may be different than shown. 3DPlans.com

# MHC 4-Person Apartment: Single and Double Rooms

---



Renderings are an artist's conception and are intended only as a general reference. Features, materials, finishes and layout of subject unit may be different than shown. 3DPlans.com

# MHC 5-Person Apartment: Single and Triple Rooms

---



Renderings are an artist's conception and are intended only as a general reference. Features, materials, finishes and layout of subject unit may be different than shown. 3DPlans.com

# MHC 8-Person Apartment: First Floor

---



Renderings are an artist's conception and are intended only as a general reference. Features, materials, finishes and layout of subject unit may be different than shown. 3DPlans.com



# MHC 8-Person Apartment: Second Floor

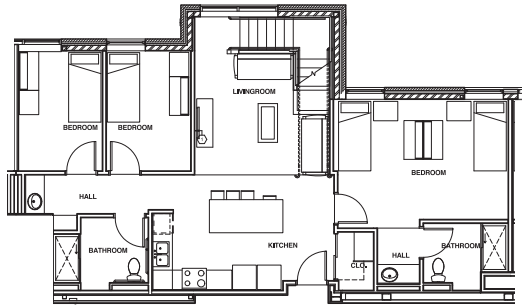
---



Renderings are an artist's conception and are intended only as a general reference. Features, materials, finishes and layout of subject unit may be different than shown. 3DPlans.com

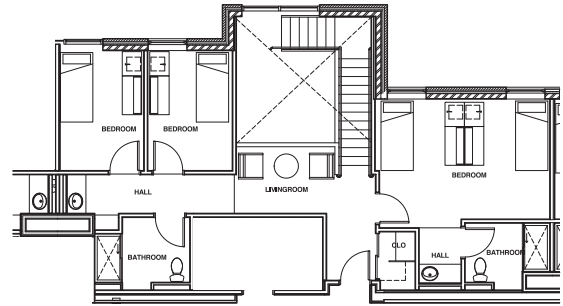
# Honors Housing Apartment Styles

See these layouts online at [www.housing.utah.edu](http://www.housing.utah.edu).



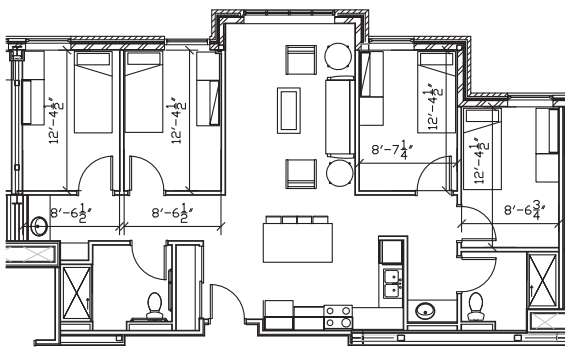
### 8-Person Apartment 1st Floor

Bedroom: approximately 12' x 8'  
Approximate square footage: 1,151 square feet



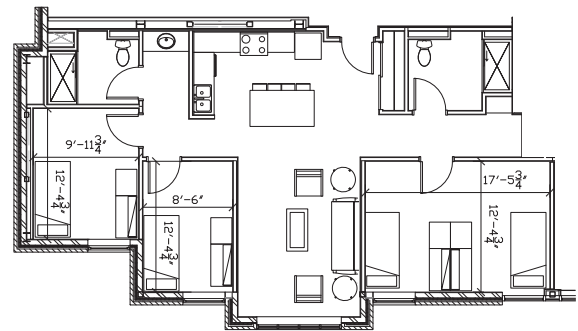
### 8-Person Apartment 2nd Floor

Bedroom: approximately 12' x 8'  
Approximate square footage: 961 square feet



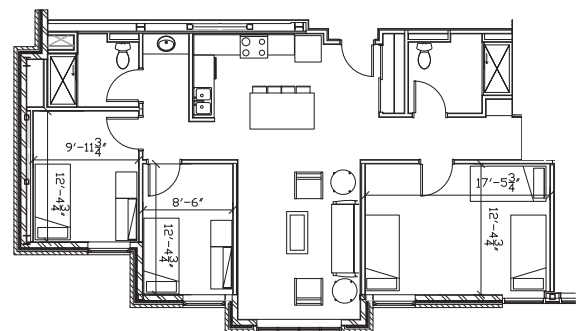
### 4-Person Apartment — Single Rooms

Bedroom: approximately 12' x 8'  
Approximate square footage: 1,100 square feet



### 4-Person Apartment — Single and Double Rooms

Bedroom: approximately 12' x 8'  
Approximate square footage: 1,172 square feet



### 5-Person Apartment — Single and Triple Rooms

Bedroom: approximately 12' x 8'  
Approximate square footage: 1,172 square feet

\* These floor plans are approximate only and may not reflect actual configurations.